

The Wheelie Good Wicking Garden

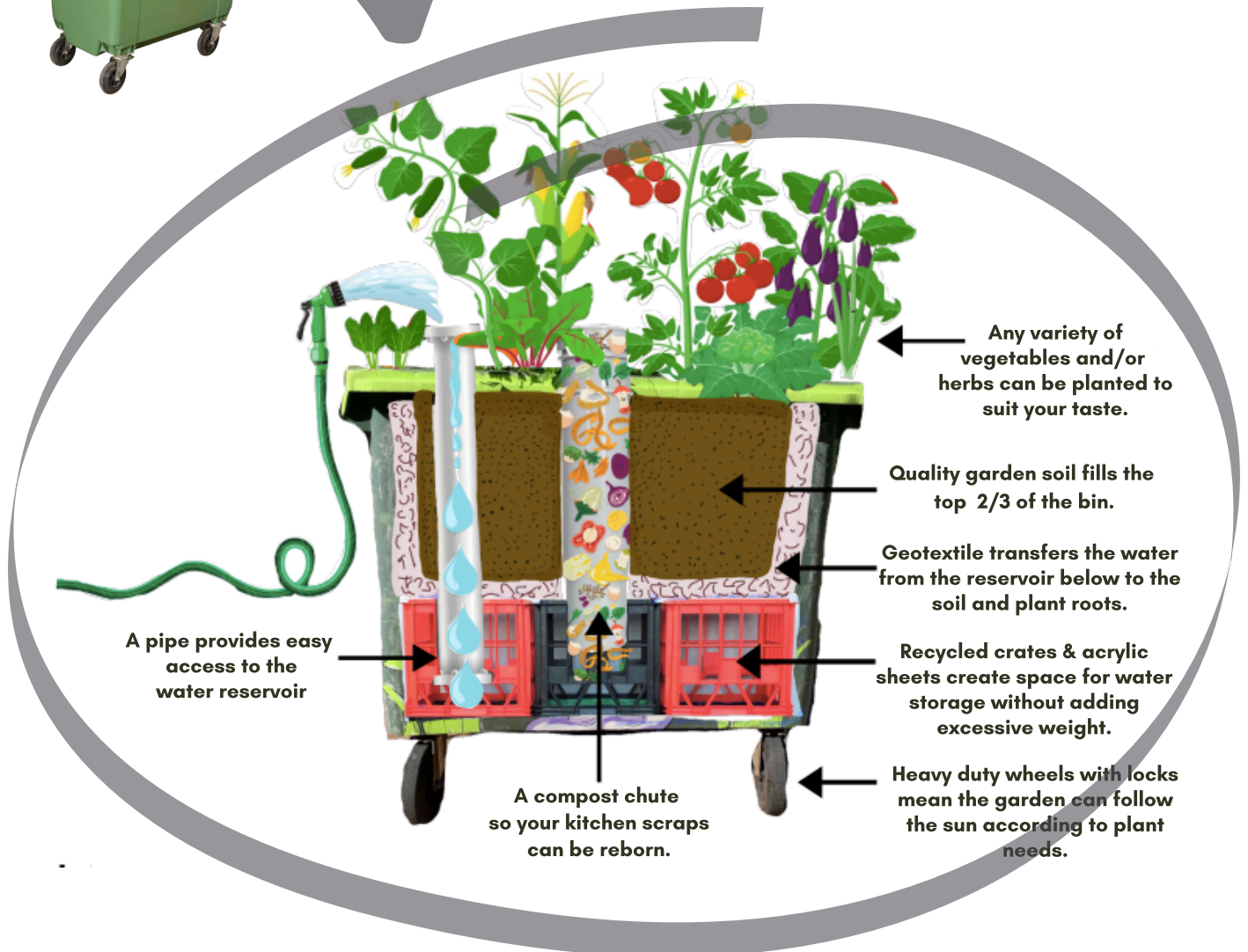
One of our commitments at Substation33 is to reduce the amount of waste going to landfill and help others do the same. When we do waste audits for companies they end up with more bins than they require, so we came up with a 'wheelie' good idea to put those old bins to use rather than see them go to landfill.

We took a 660L bin and created a self-watering mobile garden, complete with its own water reservoir and compost chute. Instead of gravel in the base, we have used old milk crates and sheets of acrylic out of recycled tv's, which provide a platform for the geotextile layer. The geotextile prevents the

soil from clogging the water reservoir and helps provide even water distribution to the soil. Other size bins such as 240L can also be used. Apart from the mobility and ease of care, these gardens are ergonomically friendly because there's no need to bend to tend! They look great too - the exterior can be painted with logos or designs that suit your aesthetic.

If you are interested in waste audits for your business or would like a *Wheelie Good Wicking Garden* of your own, see the contact details below.

From this ...



A pipe provides easy access to the water reservoir

A compost chute so your kitchen scraps can be reborn.

Any variety of vegetables and/or herbs can be planted to suit your taste.

Quality garden soil fills the top 2/3 of the bin.

Geotextile transfers the water from the reservoir below to the soil and plant roots.

Recycled crates & acrylic sheets create space for water storage without adding excessive weight.

Heavy duty wheels with locks mean the garden can follow the sun according to plant needs.

We pride ourselves on tailoring our solutions to meet your needs and requirements. If you have any questions about our products, please contact

Tony Sharp.



07 3826 1533



info@substation33.com.au



www.substation33.com.au/



www.facebook.com/substation33/

